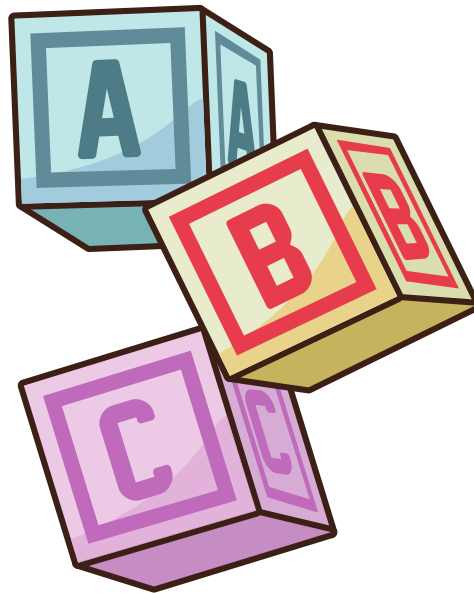




• **Autumn Term Newsletter 2019** •



**Childcare from 9am - 3pm
5 days a week in term time**

For further information, please contact Nicola Tedore.

 074370 57411

 Nicola.Tedore@westway.org

Playing Outside

As you are aware the weather is getting colder now, but we will be taking the children to play outside each day for a short period of time. We will ensure that they are wrapped up well. Please provide appropriate clothing such as hats, scarfs, gloves and gum boots if it is raining. It is really important that the children are able to go outside as it gives them the opportunity to get exercise, fresh air and to do a range of activities which improves their physical development.



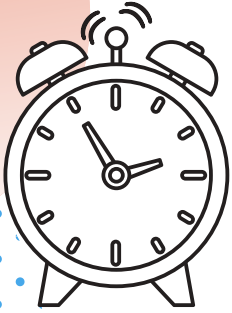
Topics this term

We are focusing on myself and winter this term. It would be good if you could talk about myself at home with the children particularly focusing on facial features, parts of the body, favourite toys and the family. In regards to winter it would be great if you could talk about the weather and what happens in winter when you are on your way to nursery.



IMPORTANT INFORMATION

Collecting your child on time



Please can you ensure that you collect your child from nursery on time. Unfortunately, if you have not collected your child by 3.10pm you will have to pay a one off fee of £5.00. If there is an emergency, please let the nursery know in advance. The nursery staff can be contacted on 074370 57411 or on 077412 48301.

Meeting with Key worker this term

We really would like you to get involved in your child's learning. This term we are going to be doing individual meetings between parents and their child's keyworkers. This will be an opportunity to find out how your child is progressing in the nursery and talk about their individual play plans for the term. Please speak to your child's key person and arrange a date and time to meet.



End of term

The last day of term is Thursday 19th December.

The nursery will close at 12pm on that day.

The nursery re-opens on the Tuesday 7th January 2020.

Christmas Party

Wednesday 11th December

We would like all parents to come to our Christmas party. You will get the chance to see your child with Father Christmas. All children can attend the nursery from 9am-3pm on that day even if this is not one of your designated days.



Think Equal

Think Equal is a global programme which aims to give children a foundation in social and emotional intelligence between the ages of three to six years. Our nursery is taking part in the pilot which is being rolled out for the first time in the Royal Borough of Kensington and Chelsea. The programme will run for 24 weeks starting in November 2019 and will consist of three half hour lessons a week focusing on a book with a range of activities. If your child is three years old we will be asking parents' permission for your child to be participate and be evaluated by us and yourself. If you require more information you can speak to Nicola or the other practitioners.