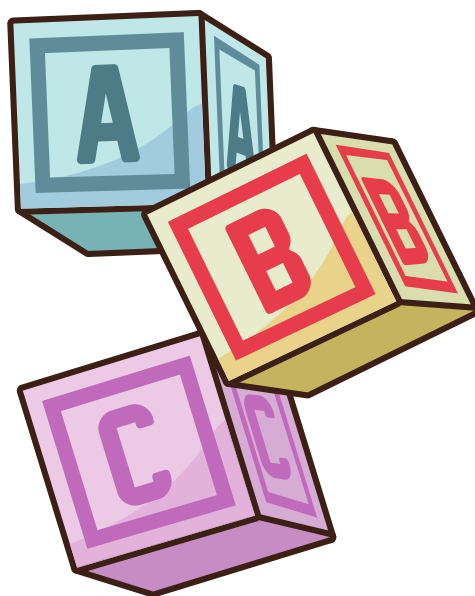




• Autumn Term Newsletter •



**Childcare from 9:00am to 3:00pm
5 days a week in term time**

For further information, please contact Nicola Tedore.



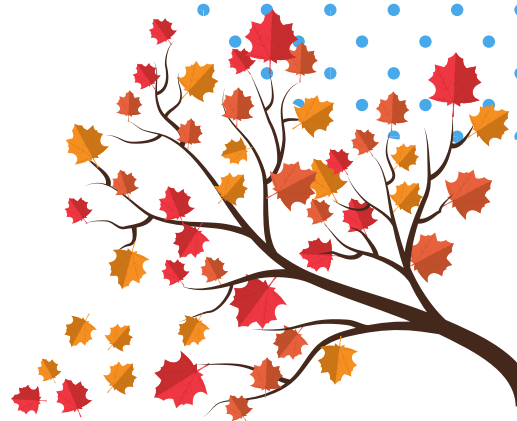
074370 57411



Nicola.Tedore@westway.org

Autumn

Last term we were looking at autumn with the children in the nursery. We spent time collecting leaves and printing and sticking with these.



All About Me



This term we have focused on all about me and we have drawn ourselves and talked about special people in our lives.

Speech and Language

We have also been focusing on speech and language with the children in small groups. This is to improve their communication skills.

“

”

IMPORTANT INFORMATION

Opening Times

We have a new number for the nursery, 074370 57411. Please use this number if your child is not coming in.

You must drop your child off between 09:00 - 09:30 in the nursery. This is important as the children in the nursery are learning and are disturbed when children arrive later. If you know you are going to be late or your child is going to be absent, please contact the nursery staff to let them know.



No Nuts



This is a reminder that we do not have nuts in our nursery. Please do not send your children with these for lunch.



Tapestry

We use tapestry to record your children's observation. If you access this, you will be able to see what your child is doing in the nursery. If you need any help accessing tapestry, please speak to a member of staff.

Christmas Party

Wednesday 12 December, 14:00-15:00.

We would like all the parents to come to our Christmas party; you will see your child with Father Christmas. All children can attend the nursery from 09:00-15:00 that day, even if it is not your day. We will provide finger food at the party.

